

X5 - E

SHIUA

SH-B6500E Semi-commercial Elliptical



Electromagnetic control resistance system

24-level resistance adjustment, precise and delicate control, rapid response, zero friction loss, meeting the needs of various intensities of exercise.



Small 1-8 levels

Medium 9-16 levels

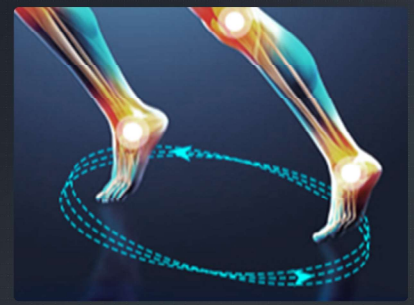
Max 17-24 levels



508mm super large stride
more vivid muscle stretch

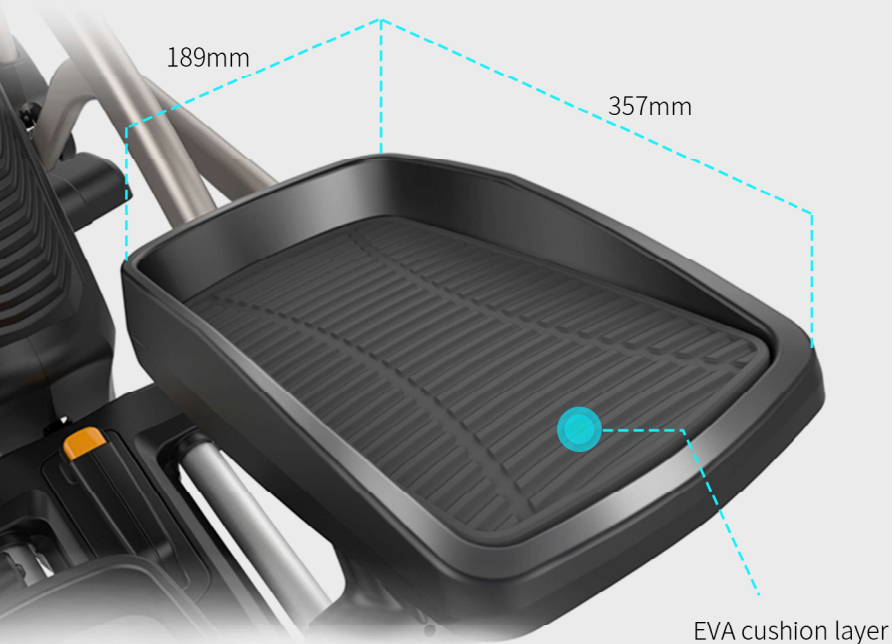
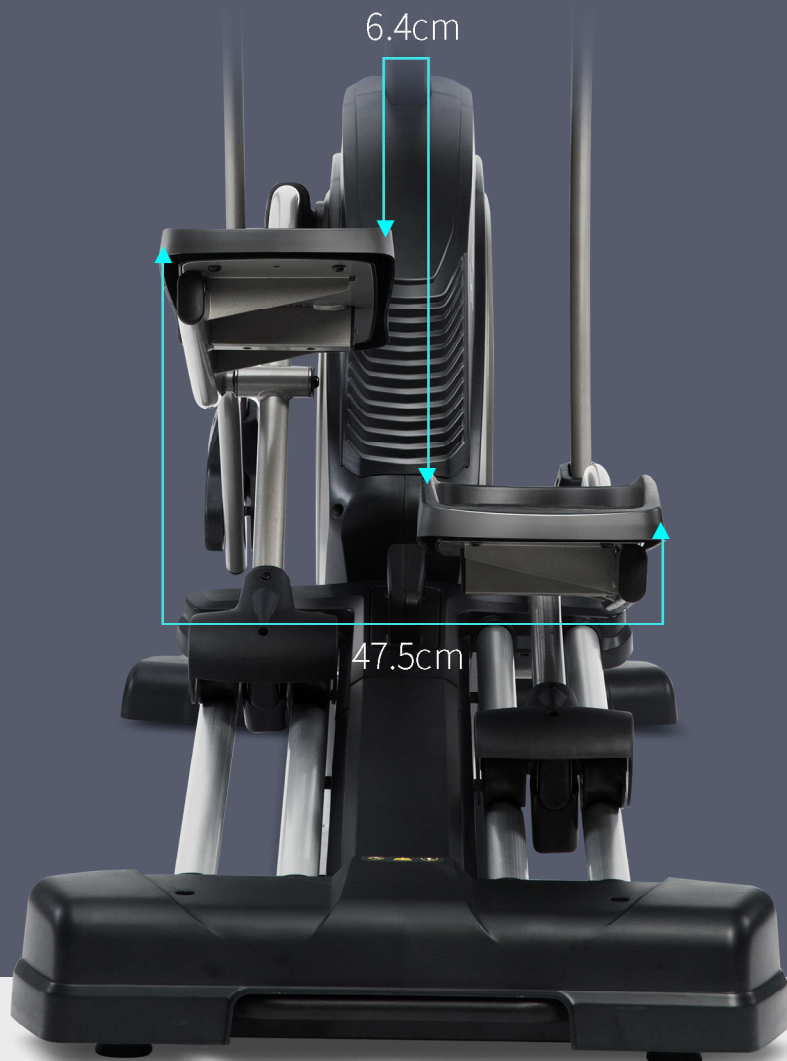


20-inch large stride



6.4cm-47.5cm Pedal Pitch

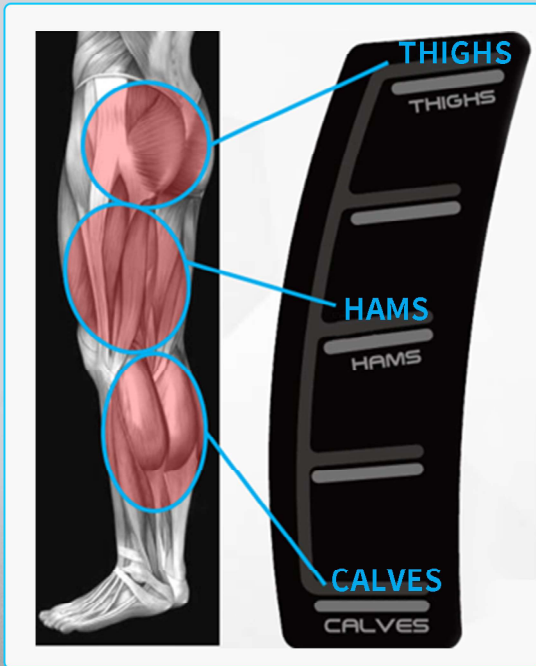
Foot Pitch is ergonomic, prevents knee and hip injury, and rejects "outer eight" feet



35.7*18.9cm ultra-wide cushioning pedals

Meet various shoe sizes of different sizes, and the EVA cushioning layer can effectively avoid joint impacts.

3 grades manual adjustment



Different exercise intensity and exercise parts can match different slopes





Ipad Holder



Stereo speakers



Large air volume fan



Commercial grade 4 aluminum alloy slide rails



Hand heart rate detection



Temperature sensing



SH-B6500E

Semi-commercial Elliptical

SPECIFICATION

Power	AC 220V±10%
Flywheel	10kg electromagnetic control two-way flywheel
Console	7-inch LCD
Heart Rate	Handle pulse rate
Resistance level	24 levels Electromagnetic control system
Stride size	20 inch (508mm)
Incline	5°, 10°, 15° (manual 3 grades)
Max user's weight:	150kg
N.W	93kg
G.W	113kg
Demension	1721*725*1638mm