

T-19 TREADMILL: RUNNING DECK



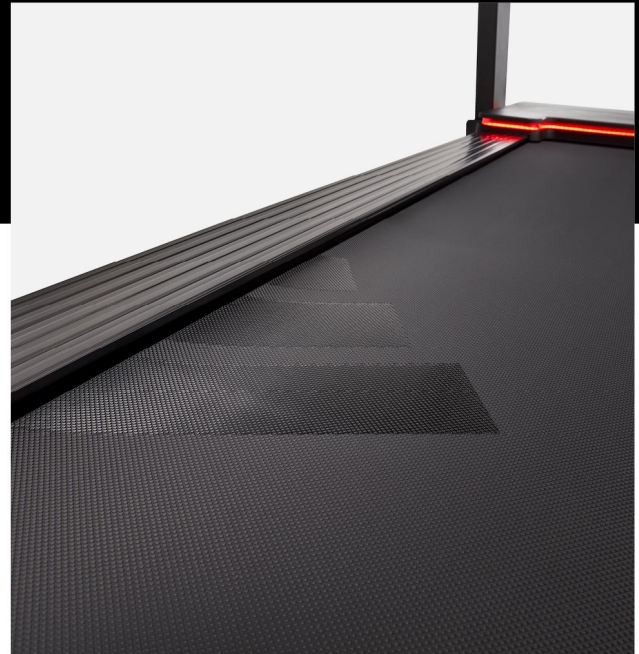
CREATE ENERGY



# T-19 TREADMILL

› NRG CUSHIONING TECHNOLOGY SOFTENS IMPACT

› SPACIOUS RUNNING AREA SUITABLE FOR ALL HEIGHTS: 140 x 51 cm / 55.1" x 20"





# T-19 TREADMILL

> ADJUSTABLE TABLET & PHONE HOLDER PROVIDES OPTIMUM VIEWING ANGLE

> 24 PRE-SET + 3 CUSTOM FITNESS PROGRAMS

> 3 TARGET MODES + 3 HRC PROGRAMS

> INTEGRATED SPEAKERS CONNECT TO YOUR DEVICE

> FEEDBACK: SPEED, TIME, DISTANCE, CALORIES, PULSE, INCLINE, HEART RATE, TARGET HEART RATE

> USB CHARGER IN THE CONSOLE

> CLEAR 8" LCD SCREEN

T-19 TREADMILL: CONSOLE



CREATE ENERGY





# T-19 TREADMILL

> IDEAL FOR CONNECTING WITH FITNESS APPS VIA YOUR PHONE, TABLET OR TV

> TABLET AND PHONE HOLDER PROVIDES OPTIMUM VIEWING ANGLE



T-19 TREADMILL: HOME FITNESS CLASSES



CREATE ENERGY



# T-19 TREADMILL

The T-19 treadmill is built around a robust 3.5hp motor, which delivers speeds of up to 20kph / 12.4mph across 15 levels of power incline, taking you from a gentle walk all the way up to a mountainous sprint.



REDEFINE YOUR HOME CARDIO EXPERIENCE



CREATE ENERGY



# T-19 TREADMILL

- › ROBUST 3.5 HP MOTOR DELIVERS EXCEPTIONAL PERFORMANCE
- › 0.5 - 20km/h / 0.3 - 12.4mph SPEED RANGE + 15 LEVELS OF INCLINE
- › SOFT DROP FOLDING MECHANISM
- › INTEGRATED HAND PULSE SENSORS
- › CLEAR AND EASY TO USE 8" LCD SCREEN
- › 24 PRE-SET, 3 CUSTOM, 3 TARGET & 3 HRC PROGRAMS
- › SPACIOUS RUNNING AREA: 140 x 51 cm / 55.1" x 20"
- › NRG CUSHIONING TECHNOLOGY SOFTENS IMPACT
- › ADJUSTABLE FAN HELPS TO KEEP YOU COOL
- › SPEAKERS CONNECT TO YOUR DEVICE
- › SOLID BUILD QUALITY: 150 kg / 330lb MAX. USER WEIGHT

